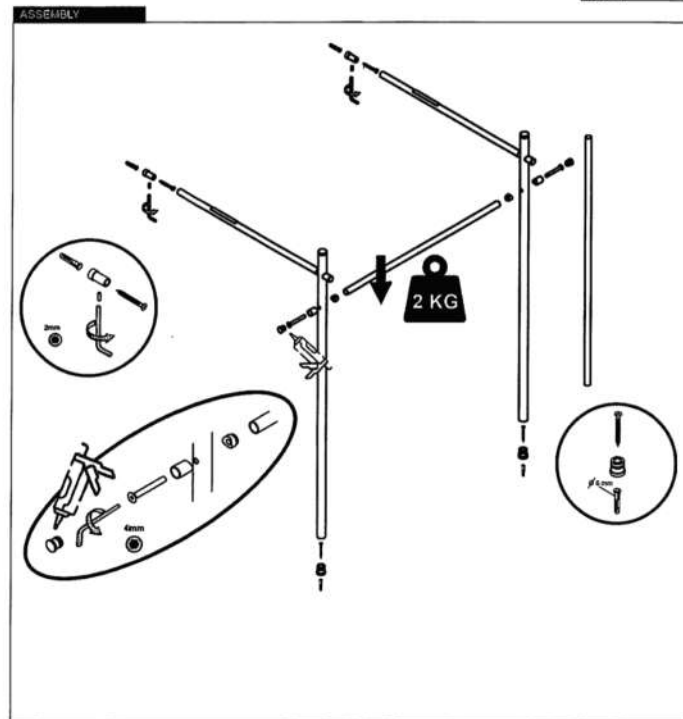


## INSTALLATION INSTRUCTIONS

### Tools Needed

- Screwdriver • Drill & Bits • 1 large Allen Key • 1 small Allen Key • 4 wood screws • 4 anchors •
  - 2 connecting screws • 2 set screws •
- Tape Measure • Level • One Tube White or Clear Silicone • Wrench • Pencil •



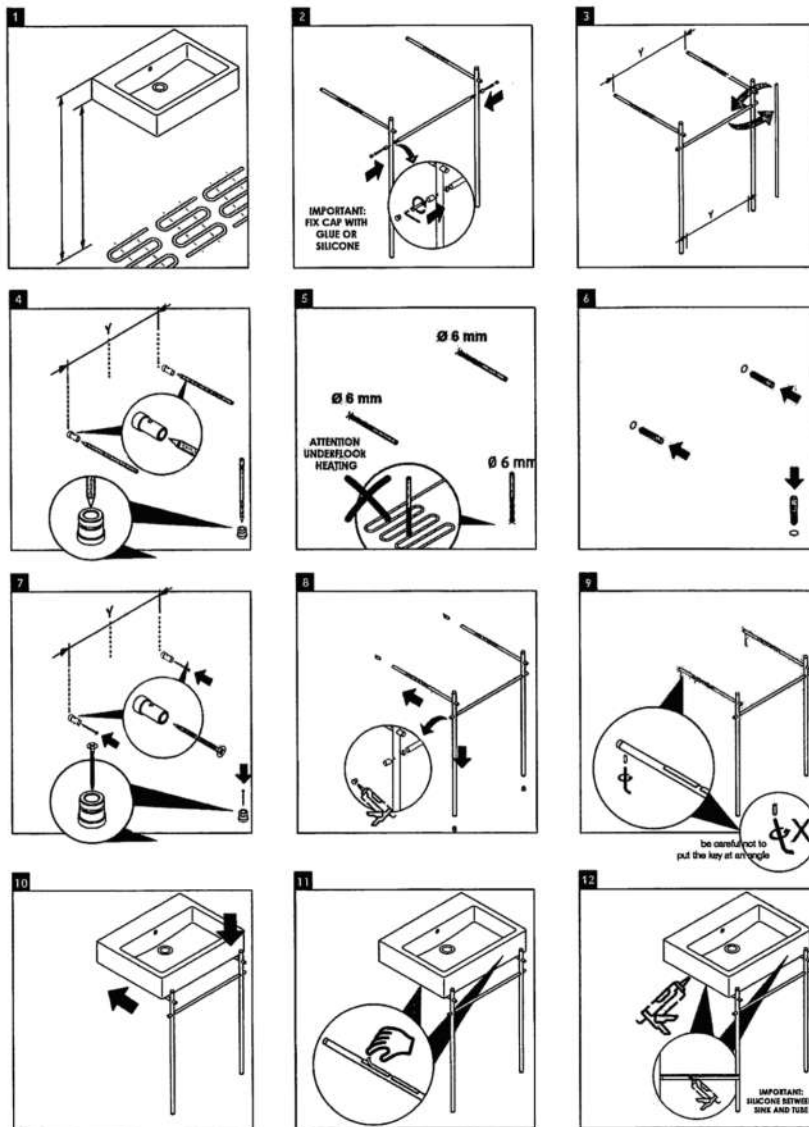
### NOTE:

**DO NOT tighten too much or you may damage console.**

**INSTALLATION INSTRUCTIONS**

**Tools Needed**

- Screwdriver • Drill & Bits • 1 large Allen Key • 1 small Allen Key • 4 wood screws • 4 anchors •  
 • 2 connecting screws • 2 set screws •  
 • Tape Measure • Level • One Tube White or Clear Silicone • Wrench • Pencil •



**NOTE:**

**DO NOT tighten too much or you may damage console.**